

TEACHERS' WELCOME BOOKLET

13th Regional Selection Conference
of EYP CZ Plzeň 2023

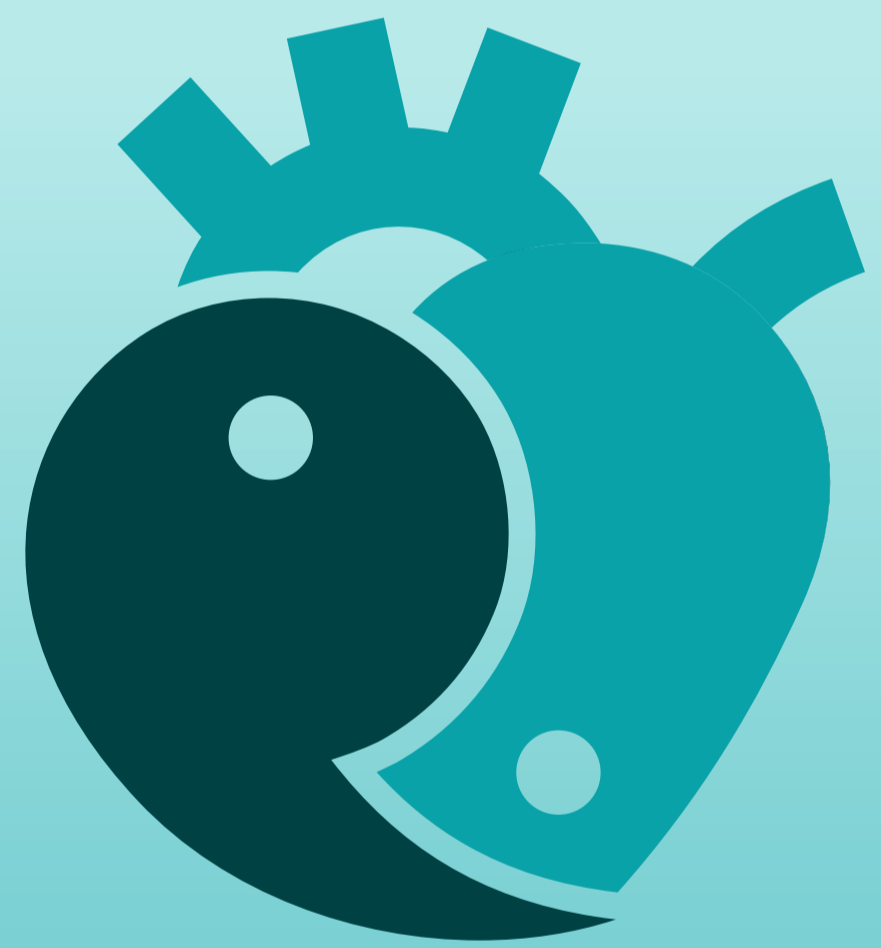






TABLE OF CONTENTS

- 4 Words of Welcome
- 9 About EYP CZ
- 9 Session Motto and Logo
- 9 Plzeň
- 10 Travel Guide
- 12 Venues
- 13 Events
- 14 Dress code
- 15 Academic Topics
- 17 Program for Teachers
- 18 What to do in Plzeň
- 24 Program for Delegates
- 25 The role of a Teachers
- 25 Important
- 25 Questions
- 26 Contacts



WORDS OF WELCOME

Head Organisers

Dearest Teachers,

We are pleased to welcome you to the 13. Regional Selection Conference of EYP CZ Plzeň 2023. We are Adam Kindl and Karel Hynek, and we are the head organisers of this event and cannot wait to meet you all there after almost a year of its preparation!

We chose Plzeň as our hosting city not only because of its beauty and culture but also for its excellent accessibility by almost all means of transport. Our session's theme: "Seeking inspiration in the heart of Europe" resonates perfectly with the city's unique atmosphere and rich history. Because of this, the main focus of our session will be humanitarian topics, such as human and civil rights, sustainable development or environment.

We would like to thank all Teachers, for supporting our projects and allowing the Delegates to improve outside the walls of their schools. Your valuable feedback helps us to grow even further and to shape our events into unforgettable experiences for all participants.

Thank you all so much for being a part of the session and bringing this crazy project from our dreams into reality. We cannot wait to see you in Plzeň in person, and afterwards somewhere else in Europe!



Adam Kindl (CZ) and Karel Hynek (CZ)
Head Organisers of the 13th Regional Selection Conference of EYP CZ Plzeň 2023



WORDS OF WELCOME

President of EYP CZ

Dearest Teachers,

It is my pleasure and great honour to welcome you to **the 13th Regional Selection Conference of EYP CZ Plzeň 2023!**

Whether this is your first time attending an EYP CZ conference or you have been with us for several years, I am very grateful for your active participation and for all your work. Without you, we would not be able to bring the conference to the students. Without you, we would not be able to fulfil our mission of inspiring young people to become active citizens who are not indifferent to how the world around them is developing. In fact, without you, EYP CZ would not exist at all.

It has been 25 years since Jiřina Vitásková, an English teacher from Prague, founded EYP CZ. We are happy that even after all these years, we have been able to preserve the tradition and that with your help, we are continuing to create a platform for safe, open and tolerant discussions about topical issues. We hope that this tradition stays for many years to come and that our cooperation only flourishes.

I am grateful for your participation and support, and I firmly believe that together we can create more remarkable events in the years ahead.

Yours faithfully,

Michaela Nguyenová (CZ)
President of EYP CZ





WORDS OF WELCOME

Session President

Dear Teachers,

It is my utmost pleasure to welcome you all to Plzeň 2023 - 13th Regional Selection Conference of EYP CZ this November! My name is Markel Kerejeta, and I have the honour to be the President of the session!

Plzeň is a beautiful city, full of history and culture, but also full of life and endless possibilities for the youth, which is why I cannot think of a better city to host this event. Under the theme 'Seeking inspiration in the heart of Europe', several topics that cover current issues such as culture, employment, and human rights, among many others, will be discussed, aiming to inspire young Europeans from the not-only geographical centre of the continent.

Teachers, thank you for trusting us! While I do not know how EYP CZ works internally, I am very much aware of all the work, effort, and especially passion many of you put into encouraging your students to step outside of their comfort zones and participate in projects such as EYP. We always talk about how EYP is from and for the youth, which is very true, and makes it as great as it is! But EYP would not exist if it were not for the drive and help of many engaged and extremely enthusiastic teachers all over Europe.

I am eager to meet everyone and seek inspiration from each and every one of you in Plzeň, the heart of Europe!

All the best,



Markel Kerejeta (ES)

President of the 13th Regional Selection Conference of EYP CZ Plzeň 2023





WORDS OF WELCOME

Session Editor

Dear Teachers,

I'm thrilled to be the Editor for this EYP session! Our journey together promises creativity, professionalism, and a lot of fun. I eagerly welcome each one of you to contribute your unique spark to our Media Team. Let's craft exceptional stories, learn, and grow while having an unforgettable time. Get ready for an amazing session filled with creativity and camaraderie!

Best,

Egzon Musliu (XK)

Editor of the 13th Regional Selection Conference of EYP CZ Plzeň 2023





WORDS OF WELCOME

Head of Jury

Dear participants,

It is my utmost pleasure to welcome you to the 13th Regional Selection Conference of EYP CZ Plzeň 2023. My name is Kuba and I am the Head of Jury at this session. As the theme of the session revolves around inspiration, I hope that every participant finds what drives them and is able to get inspired to become the best version of themselves, be it even only for a few days of the session. Even though EYP may sometimes feel like an overwhelming experience, I wish that you take away amazing memories and take those on your further EYP journey.

Although the Jury is often perceived as a daunting presence not only for the Delegates, one of our goals for Plzeň is to change this view and hopefully bring our team closer to everyone. Additionally, we would like to take the attention away from the selection process, because we believe that it does not matter if you are selected, if you enjoy EYP and you want to participate, you will find a way regardless.

To conclude the welcoming round, I am looking forward to seeing your lovely faces and hopefully contributing to the amazing experience that Plzeň is almost certainly going to be.

Yours sincerely,

Kuba Rech (CZ/SI)

Head of Jury of the 13th Regional Selection Conference of EYP CZ Plzeň 2023





ABOUT EYP CZ

The **European Youth Parliament (EYP)** is a **student non-profit, politically neutral organisation**, providing one of the largest platforms for non-curricular education in Europe. It gives its participants a forum to **develop and express** their opinions on a wide range of topics. By bringing **young people** from different backgrounds **together**, it builds intercultural understanding and friendships across borders. **Thousands** of young people from all over Europe are actively involved in the organisation, making it truly youth-driven – **for young people, by young people**.

European Youth Parliament CZ, the Czech branch of the network, was founded in 1998. Our National Committee organises two **Regional Selection Conferences and one National Selection Conference** per year, however, besides those it offers many **other** educational **events** and informal gatherings for its members.

SESSION MOTTO AND LOGO

‘Seeking inspiration in the heart of Europe’

The motto of our Conference is **‘Seeking inspiration in the heart of Europe’**. In light of the pervasive disinformation prevailing in the global landscape, the future of Europe remains uncertain. The objective of this session is to illuminate the prevailing **humanitarian and cultural concerns** that have **a direct impact on all of us**. With the overarching theme of the session being centred on this objective, it is our conviction that the attendees will acquire the necessary skills to furnish precise and dependable information on these matters, **dispel any prevalent misunderstandings, and foster proactive civic involvement**. We firmly believe that it is incumbent upon the younger generation to assume leadership and ensure that their voices are acknowledged and valued.

As the session centres its attention on matters of social affairs and culture, the primary element of our logo takes the form of a **human heart**. Within this heart, we find a dichotomy between dark and light halves, reminiscent of **the yin and yang symbol, representing balance**. Intricately woven into the design is a quotation mark, serving as a representation of the imperative dialogue required to discover common ground and, ultimately, progress. This quotation mark also takes on the shape of **the letter "P," paying tribute to the hosting city of Plzeň**.

PLZEŇ

With almost 180 000 inhabitants, the **4th largest city** in the Czech Republic was chosen as the **host city of the 13th Regional Selection Conference of EYP CZ Plzeň 2023**. Founded in 1295 by the Czech king Wenceslas II, the city lies at a **very magical place** – on the confluence of four rivers Úhlava, Úslava, Radbuza and Mže. Besides the **remarkable history and rich-life present**, Plzeň is **world renowned** due to its local enterprises such as legendary **Pilsner Urquell** or **Škoda works**.



TRAVEL GUIDE

Getting to Plzeň...

Please make sure to arrive at the Accommodation venue **from 9:30 AM to 11:30 AM CET on Friday 10th of November 2023.**

From Prague...

...where you got by plane.

The quickest and cheapest way to get to Plzeň for you is with Flixbus, **from Praha - Zličín Bus Station**. You can get to Plzeň by train as well, but it takes more time, may be more expensive and requires more transfers so we would advise against this.

The bus connection can be **bought online on the Flixbus [website](#).**

The ride takes about an hour and the ticket can be bought for as less as 4 EUR with enough notice.



To get to Praha - Zličín Bus Station, you will need to take either the **bus number 100**, which arrives **every 15 minutes** or so, to both Terminal 1 and Terminal 2, or an Uber/Taxi. However, we generally advise against this option as it is not only about ten times more expensive than the 30-minute public transport but also being considered non-sustainable, which partially goes against the goals of this session. If you decide on the first option, you should **buy the 30-minute ticket** for 30 CZK. For more on Prague's public transport, check out the "Getting around Praha" section on our session website.

...where you got by train.

You got lucky with being on a train so much! We envy you. You must have probably arrived at Prague's main train station, (Praha hlavní nádraží, Praha hl. n.) or Praha - Smíchov, if so, take one of these trains to get to Plzeň:

- **R 77_ Berounka**
- Praha hl.n. - Klatovy
- **EC 36_ Západní expres**
- Praha hl.n. - München Hbf
- **IC 56_ Západní expres**
- Praha hl.n. - Cheb
- **IC 51_ Pendolino**
- Bohumín - Františkovy Lázně

(Notice the blank spaces. They are stand-ins for numbers which change depending on the time of departure.)



If you did **not** arrive at Prague main station or Praha - Smíchov, take any train that will get you to one of these stations. You can find which train to take on this [website](#).

For trains within the city boundary, standard public transport fees apply. For more about fares, consult the “[Getting around Praha](#)” chapter on our session website.

ěTo buy a ticket for any train outside the city boundary, you can either visit the České Dráhy [website](#) or find the kiosk located at every train station. (In Prague's main station, for example, it is under the main waiting area with the red ceiling.)



...where you got by bus.

If you ended up in Prague by bus, there is most probably only a single place where you could have gotten off, that being [Praha Florenc](#). In the unlikely case that you are getting off your bus at any other bus stop, please consult [Google Maps](#), [IDOS](#), or reach out to our Travel Support Organiser Isabella. Consult the “[Getting around Praha](#)” chapter for fares on our session website.

From Munich...

Getting from Munich to Plzeň is a bit more complicated than from Prague, but it is still easier than from most other cities with international connections. When coming to Plzeň from Munich, you want to arrive by train, since the bus connections are practically non-existent. Specifically, with the “**EC 36_ Západní expres (München Hbf - Praha hl.n.)**” It takes around **4 hours** to get to Plzeň but does not involve you having to transfer to 3 different connections, unlike some other options. Tickets for the ride can once more be bought on the [České Dráhy website](#). If you consider yourself to be a [rich man](#), you can spring for the Deutsche Bahn ticket through their [website](#), which will cost you more than double the price. (So do NOT use that one!)

...where you got by plane.

If you get to München-Flughafen by plane, you need to get to the München-Hauptbahnhof in order to catch the connection mentioned above. You can get there either by **S-Bahn line number 1 or number 8**. The journey will take approximately **45 minutes**.

As for tickets, you should buy the “**Single Adult Ticket**” for **13 EUR**. Tickets can be **purchased at ticket machines** at U-Bahn and S-Bahn stops, as well as **online and via the MVV or MVG app**. In addition to the ticket vending machines, tickets are sold at service points, customer service centres, info points and a large number of private points of sale (e.g., kiosks and stationery stores, same as in Prague).

Please remember to **validate your ticket** before starting your journey.

Same as with Prague, we advise against using an **Uber or a Taxi** to get to the train station, as one trip can cost you around **70 EUR**. *Yikes!*



...where you got by train.

If you got to München by train you would have probably ended up on München Hbf (Hauptbahnhof) and you need to be there in order to catch the connection mentioned above, therefore **no transportation across the city is needed**. You got lucky!

...where you got by bus.

If you got to München by bus, you most probably ended up in München Hackerbrücke. You should not worry about getting a public transport ticket, since the Bus station is just around the corner from the train station. Simply take the **5-minute walk** and you will be there in no time!

VENUES

- **Accommodation:** Domov Mládeže VOŠ a SPŠE Plzeň
These dormitories for high school students, with a capacity of 700 people, are one of the largest facilities of its kind in the Czech Republic.
- **Teambuilding + Committee work + General Assembly:** SPŠE Plzeň
A respectable, high-esteemed school which provides some of the best education within its field in the region.
- **Opening ceremony:** Západočeská univerzita
Well-known for its Faculty of the Applied Sciences, the University of the West Bohemia is one of the most prestigious universities in the Czech Republic.



EVENTS

Team building (TB)

First, enjoyable games await the participants to get to know each other. The aim of these activities is to foster a positive and optimistic atmosphere. In addition, Delegates will have the opportunity to meet their Committee and Chairperson for the first time.

Dress code: Casual

Opening Ceremony (OC)

Each conference starts with an Opening Ceremony, during which the Leadership of the session is formally introduced. Esteemed speakers extend their warm greetings to the attendees, and following their addresses, the conference may officially commence.

Dress code: Formal

Eurovillage

The dinner scheduled for Friday shall comprise a diverse buffet featuring culinary delights from various regions across Europe. Each Delegate is expected to contribute by bringing traditional dishes representative of their assigned country. On this occasion, you will have the unique opportunity to sample an assortment of delicious dishes from different parts of Europe.

Dress code: Formal

Committee Work (CW)

Committee work is the main part of the conference. In this context, students, under the guidance of their chairperson, engage in the process of devising, discussing and documenting innovative solutions to the problem assigned to their committee. The culmination of their efforts will be the formulation of a resolution that will then be presented during the General Assembly.

Dress code: Smart Casual

Panel Debate

During the Panel Debate, your students will have the opportunity to freely discuss many different topics with experts.

Dress code: Smart Casual

General Assembly (GA)

The General Assembly is the culmination of several days of diligent work by the Delegates. Individual Committees present their resolutions, which they must defend before other committees. Following each defence, a vote is taken to determine the approval or disapproval of the resolution.

Dress code: Formal

Closing Ceremony (CC)

The General Assembly is followed by the Closing Ceremony, which concludes the conference. During this event, the speakers will deliver farewell speeches, bringing the Regional Selection Conference to a close.

Dress code: Formal



DRESS CODE

Casual

This is any clothing that is comfortable for Delegates. It should be comfortable for sitting, moving around and light jogging which might occur during the Teambuilding. The recommended attire is similar to everyday wear, such as jeans, dark trousers, a shirt or a T-shirt and a jumper.

Events: Teambuilding (for delegates)

Smart Casual

Clothing appropriate for a long period of working in the committee should be both practical and casual and should ensure comfort without compromising on appearance. We recommend combining of trousers with a shirt or sweater, or a skirt with a blouse. It is advised that students refrain from wearing sneakers or loose-fitting jeans.

Events: Committee work, Panel Debate

Formal

It is important to choose anything that gives delegates a sense of elegance and professionalism. It is advisable to opt for a suit accompanied by a bow tie or necktie, or alternatively, a dress or longer skirt.

Events: Opening Ceremony, Eurovillage, General Assembly, Closing Ceremony



ACADEMIC TOPICS

AFCO

Rule of which law? Separation of powers is one of the fundamental pillars of Western democracy. However, interference of the political power in the judiciary system is common in EU Member States like Hungary, Poland or Spain. Keeping this in mind, how should the EU act in order to ensure the rule of law in all its Member States?

AFET

Security risk, humanitarian crisis, or potential for change? For the past decade, Member States such as France and Germany have been present militarily in the Sahel region, emphasising the security and migration risks the regional instability may have for Europe. Keeping in mind Europe's imperialistic history in the region, how can Member States efficiently provide humanitarian aid to the Sahel countries and support the building of strong civic societies in the region?

CULT

No history, no future: Since the fall of authoritarian regimes in Europe, many historical monuments and sites reminiscing about those past periods have been destroyed. How can the EU protect the cultural and historical heritage of its Member States while ensuring there are no steps back in democracy?

EMPL

9 to 5, what a way to make a living, all taking and no giving: Psychosocial risks in the workplace, such as high workload or long working hours, have profound negative impacts on workers, employers, and the economy. How should the EU enhance its legal framework? to explicitly address and regulate psychosocial risks and mental health issues in the workplace, promoting worker well-being and overall occupational safety and health?

ENVI I

Navigating Europe's Highs: The European Drug Report 2023, shows alarming data on illicit drug use, addiction rates, and availability of substances among Europeans. With 6 out of 166 overdose deaths involving illicit drugs, what steps should the EU take to prevent the widespread "epidemic" of drug abuse?

ENVI II

Marry The Night: Approximately one-third of the world's population lives in an area where the Milky Way is no longer visible at night due to artificial light. Keeping in mind its negative effects on wildlife, ecosystems, and citizens' health, as well as the potential benefits associated with increased energy efficiency, what steps can the EU take to reduce light pollution?

ITRE

Nuclear. It's pronounced nuclear. Nuclear energy has been labelled as "green" by the EU Green Deal. Being mindful of its key role in the green transition, as well as of its risks and long-lasting negative consequences, how should it be regulated within the EU?



LIBE I

Doxx the messenger: In 2021, 9 out of 10 fact-checking outlets in Europe were targeted with online harassment and smear campaigns, including stalking and doxxing. What steps should the EU take to enhance media freedoms and protect journalists, media workers and their families from these intrusive and abusive practices?

LIBE II

Marriage for everyone and everywhere: While the Charter of Fundamental Rights prohibits discrimination on any grounds, the EU must balance LGBTQIA+ rights with varying Member States' perspectives. As more children grow up with same-sex parents, how can the EU ensure mutual recognition of family relations, especially for same-sex parents, across Member States to uphold their rights and protect their children legally?



PROGRAMME FOR TEACHERS

Friday, November 10, 2023

11:00 – 12:30 Arrivals + Check-in

13:00 – 14:00 General teambuilding

14:15 – 18:30 Presentation of the programme, accommodation, free time

19:30 – 20:30 Opening ceremony

20:30 – 22:00 Eurovillage

Saturday, November 11, 2023

08:00 – 08:30 Breakfast

09:00 – 12:00 Accompanying programme / free time

12:30 – 13:00 Lunch

13:30 – 18:00 Committee visits

18:00 – 18:45 Free time

19:00 – 20:30 Panel Debate

21:00 – 23:00 Dinner with the Board of EYP CZ

Sunday, November 12, 2023

07:00 – 07:30 Breakfast

08:00 – 12:45 General Assembly

12:45 – 13:45 Lunch

15:30 – 17:15 General Assembly + Final meeting with the Board of EYP CZ

17:15 – 18:45 Closing ceremony



WHAT TO DO IN PLZEŇ

If you are interested in creating your own program, or just want some advice on where to go so we can make your visit to Pilsen as pleasant as possible, you can read here what you can explore in Pilsen.

Where to go, what to see and what to experience



Name in English: Museum of West Bohemia in Pilsen

Name in Czech: Západočeské muzeum v Plzni

Information: One of the largest historical, art and natural history collections

Address: Kopeckého sady 357/2, 301 00 Plzeň 3

How far it is from Accommodation: 3,1 km

Cost: 200 Kč for everything

Website: www.zcm.cz

Name in English: Techmania Science Center

Name in Czech: Plzeňské science centrum Techmania

Information: Interactive exhibitions and scientific and technical shows, there is also a 3D planetarium

Address: U Planetária 2969/1, 301 00 Plzeň 3

How far it is from Accommodation: 5,9 km

Cost: 160 Kč for everything

Website: www.techmania.cz



Name in English: Pilsner Urquell Brewery Tour

Name in Czech: Plzeňský Prazdroj - prohlídka

Information: One of the largest historical, art and natural history collections

Address: U Prazdroje 64/7, 301 00 Plzeň 3

How far it is from Accommodation: 2,5 km

Cost: 380 Kč/110 minutes

Website: www.prazdroj.cz

Name in English: Historic Underground of Plzen Tour

Name in Czech: Plzeňské historické podzemí - prohlídka

Information: Historic cellars, where Pilsner Urquell beer is still produced in the traditional method as in the days of the first brewer

Address: U Prazdroje 64/7, 301 00 Plzeň 3

How far it is from Accommodation: 2,5 km

Cost: 190 Kč/60 minutes

Website: www.prazdroj.cz





Name in English: Museum of Horrors

Name in Czech: Muzeum strašidel

Information: A unique exposition of ghosts and fairytale creatures from Pilsen and the Pilsen Region

Adress: Náměstí Republiky, 301 00 Plzeň 3

How far it is from Accommodation: 3,4 km

Cost: 80 Kč for everything

Website: www.muzeumstrasidel.cz

Name in English: Zoological and botanical garden (ZOO)

Name in Czech: Zoologická a botanická zahrada (Zoo)

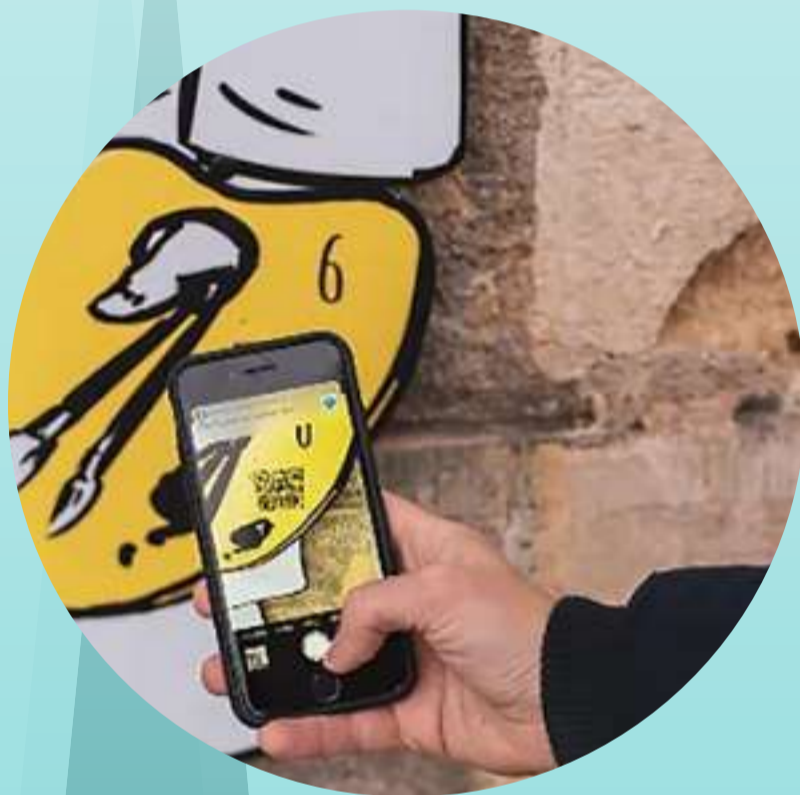
Information: The Pilsen Zoo is the oldest in the country, among the most popular animals is a flock of Humboldt penguins

Adress: Pod Vinicemi 928/9, 301 00 Plzeň 1

How far it is from Accommodation: 4,8 km

Cost: 220 Kč

Website: www.zooplzen.cz



Name in English: Industrial Trail - DEPO2015

Name in Czech: Industriální stezka - Stopovačka DEPO2015

Information: Visitors to using a QR code, they can watch short videos about the place, guide in the videos is always a historical figure closely related to the location

Start: Habitat behind the gate to DEPO2015, Presslova 14, Pilsen

How far it is from Accommodation: 4,9 km

Website: www.depo2015.cz

Name in English: Cathedral of St. Bartholomew

Name in Czech: Katedrála svatého Bartoloměje Plzeň

Information: The Church of St. Bartholomew in Pilsen was built right after the foundation of the city at the end of the 13th century, the building that has preserved was built during the 14th and 15th centuries

Adress: Náměstí Republiky, 301 00 Plzeň 3

How far it is from Accommodation: 3,5 km

Website: www.bip.cz/cs/katedrala-sv-bartolomeje



Name in English: Dominican Convent in Plzeň

Name in Czech: Klášter dominikánek Plzeň

Information: The former convent of the Dominican nuns of St. Rosalie, near the Church of St. Anne and St. Rosalie, is a Baroque building designed by the famous architect Jakub Auguston from Plzeň

Adress: B. Smetany 179, 301 00 Plzeň 3-Vnitřní Město

How far it is from Accommodation: 4,4 km



Name in English: Great Synagogue

Name in Czech: Velká synagoga

Information: The Great Synagogue in Pilsen is the third largest building of its kind in Europe and the fifth in the world, and it is the largest synagogue in the Czech Republic

Address: Sady Pětatřicátníků 35/11, 301 37 Plzeň

How far it is from Accommodation: 3,1 km

Name in English: Old Synagogue

Name in Czech: Stará synagoga

Information: The old synagogue was the cradle of the modern Jewish community, which began to grow in Pilsen in the second half of the 19th century

Address: Smetanovy sady 80/5, 301 00 Plzeň 3

How far it is from Accommodation: 3,8 km



Name in English: Old Water Tower (Black Tower Pilsen)

Name in Czech: Vodárenská věž (Černá věž Plzeň)

Information: The Gothic water tower from 1532 was rebuilt and raised after 1822, it was part of the fortification of Pilsen, but mainly it supplied water

Address: Pražská 309/19, 301 00, Plzeň 3 - Vnitřní Město

How far it is from Accommodation: 4,7 km

Name in English: Borsky park

Name in Czech: Borský park

Information: The park is very popular among the inhabitants of the southern part of Pilsen and is widely visited, in addition to relaxing one can play sports here, there is a mini-golf course, a gym and a tennis court

Address: 301 00 Plzeň 3

How far it is from Accommodation: 5,7 km



Name in English: Lookout Sylván

Name in Czech: Rozhledna Sylván

Information: It was built in 2001 and from the observation platform it offers a circular view of the surroundings of Pilsen, Radyni Castle or, in good visibility, the peaks of Šumava

Address: Sylvánský Vrch v, 323 00 Plzeň 1

How far it is from Accommodation: 1,5 km



Where to dine

Na Spilce pub

This pub is located in the Pilsner Urquell brewery in Pilsen. The Na Spilce pub is a must for all beer and beer lovers. The restaurant offers traditional Czech cuisine, whose dishes perfectly match their world-famous beer. The unique atmosphere together with the rich history of the brewery creates an unforgettable gastronomic experience.

How far it is from Accommodation: 2,6 km



Na Spilce pub

Restaurant & Hotel u Salzmannů

This historic pub and restaurant has been serving customers since the 17th century. With traditional Pilsner dishes and a wide range of beers, the Restaurant U Salzmannů offers a truly authentic Czech gastronomic experience. The rustic interior and friendly staff add to the charm of this popular establishment.

How far it is from Accommodation: 3,1 km

Pizzeria Da Pietro

For those who crave Italian cuisine, Pizzeria Da Pietro is the place to be. Known for its thin dough pizzas and homemade pastas, this restaurant offers a slice of Italy in the heart of Pilsen. The warm, welcoming atmosphere and excellent service make it a favourite among locals and tourists alike.

How far it is from Accommodation: 4,4 km

Restaurant Rango

Offering a fusion of Czech and international cuisine, Restaurant Rango is a modern dining establishment in Pilsen. The menu changes seasonally, guaranteeing fresh and innovative dishes. The stylish interior and attentive service make it a popular choice for any occasion.

How far it is from Accommodation: 3,1 km

Groll Brewery and Restaurant

This brewery and restaurant offers visitors the opportunity to taste beer brewed according to traditional methods and recipes. In addition to beer, it also offers a wide range of Czech and international food.

How far it is from Accommodation: 3,2 km

Restaurant and wine bar U Mansfelda

The U Mansfelda restaurant is located in a historic building and offers traditional Czech cuisine with a modern twist. The restaurant's cosy atmosphere and excellent service make it a popular choice for locals and tourists alike.

How far it is from Accommodation: 3,1 km



Kozlovna Doubravka

This traditional Czech pub offers a wide range of beers, including of course the famous Kozl. The menu includes classic Czech dishes, making Kozlovna another great place to try authentic Czech food and drink.

How far it is from Accommodation: 2,7 km

Zapa Bar

Known for its creative cocktails and modern cuisine, Zapa Bar is quite a trendy place in Pilsen. The stylish interior and friendly staff create a welcoming atmosphere and the menu offers a range of dishes to suit everyone's tastes.

How far it is from Accommodation: 3,5 km



Zapa Bar

Uctívány Camel

The Uctívány Velbloud restaurant is one of the evergreens in Pilsen. The impressive interior and atmosphere is just the beginning of the dining experience. Enjoy the fresh Czech cuisine, complemented by the special Uctívány Velbloud 12% beer.

How far it is from Accommodation: 4,2 km

Everest Indian Restaurant

Indian cuisine is widely popular, especially for its unusual combinations of flavours, aromas and vegetarian dishes. Sample authentic Indian specialties - with or without meat - accompanied by nanu pancakes or rice. After your meal, don't forget to try one of the traditional desserts.

How far it is from Accommodation: 3,7 km

Restaurant Potrefená Husa

This modern restaurant offers a wide range of dishes, including traditional Czech cuisine and international specialities. It is also known for its excellent beer selection.

How far it is from Accommodation: 4,5 km

Šenk Na Parkánu

Among the best restaurants in Pilsen is Šenk Na Parkánu, which relies on tried-and-tested Czech cuisine, goodies with beer or regional specialties. The interior of the Šenk depicts a traditional Czech pub, but this one is also connected to the Brewery Museum.

How far it is from Accommodation: 3,2 km



Šenk Na Parkánu



Tips & Tricks

Pilsen offers some of the best small shops and small businesses with everything you can imagine. On every corner you will find something interesting. Some of the most interesting ones include.



Name in English: Spices from Antonin

Name in Czech: Koření od Antonína

Information: This is a well-known small business selling the best quality spices from around the world, professionally packaged in bags and spices. There is something for everyone in the spice blends, they are very unique. If you are not interested in spices, you can also get a cookbook here.

Address: Dominikánská 283/7, 301 12 Plzeň 3

Website: www.koreni.cz



Name in English: Nugatu

Name in Czech: Nugatu

Information: The store focuses on healthy Asian food, with products sourced from Japan, South Korea, Thailand, Vietnam and many other countries. You can find Asian food (fruits, vegetables, and many others), confectionery and specialties.

Address: Otýlie Beníškové 1695/16, 301 00 Plzeň 1

Website: www.nugatu.cz

Breweries are flourishing in Pilsen, not only the most famous Pilsner Urquell, which is why very good small or start-up breweries are settling here. For real beer lovers, a visit to these breweries can be more interesting than a visit to the biggest and most famous one.

Here is an overview of all small Pilsner breweries:

- Beer Factory
- Kalikovar Brewery
- The first brewery in Roudnice
- Raven Brewery
- Brewery Purkmistr
- Family brewery Radobyčice
- Brewery Pilsner Bandit





PROGRAMME FOR DELEGATES

Friday, November 10, 2023

- 09:30 – 12:30 Arrivals + Check-in
- 13:00 – 13:45 General teambuilding
- 14:00 – 18:00 Committee teambuilding
- 19:00 – 20:00 Opening ceremony
- 20:00 – 21:30 Eurovillage

Saturday, November 11, 2023

- 08:00 – 08:45 Breakfast
- 09:00 – 12:00 Committee work
- 12:15 – 13:15 Lunch
- 13:30 – 18:00 Committee work
- 18:10 – 18:45 Dinner
- 19:00 – 20:20 Panel Debate
- 21:00 – 00:00 Farewell Party

Sunday, November 12, 2023

- 07:00 – 07:50 Breakfast
- 08:00 – 12:45 General Assembly
- 12:45 – 13:45 Lunch
- 15:30 – 17:15 General Assembly
- 17:15 – 18:45 Closing ceremony



ROLE OF A TEACHER AT THE CONFERENCE

Motivation of Your Students

Conferences are not only about representing your school, work and knowledge. Their main objective is to foster new contacts and improve various skills. Each year, Delegates leave these conferences equipped with improved English language skills and a newfound confidence in reaching a wider audience.

Preparation for Committee Work

After being assigned to the committee, Delegates will receive an Academic preparation kit. **Feel free to encourage them** to read the Topic overview and **discuss any questions** with them. Every moment taken to prepare for the conference will ease the workload ahead of your students.

Communication during the conference

Your students will certainly gain a lot of new experiences and ideas. Just by listening to them, you will create a sense of enthusiasm and encourage them to persevere in their endeavours.

Appreciating the work of Your Students

Recognition and praise are some of the best rewards. Recognition of their achievements in the classroom or in the presence of fellow teachers will undoubtedly bring them great joy as well.

Dress code

Sometimes new participants underestimate the dress code of different parts of the conference, which can lead to discomfort. Engaging in discussion on this matter can effectively prevent the negative feelings that students experience.

IMPORTANT

To foster the principles of sustainability, we kindly request that all attendees come prepared with their own reusable bottles and mugs. We also kindly ask that you relay this message to your students. In the case that a participant will not be able to bring a cup, we will offer EYP CZ cups for a refundable deposit of 50 CZK.

IN CASE OF ANY QUESTIONS

Do not hesitate to contact the Head Organisers of RSC Plzeň – Karel Hynek Adam Kindl, the Organiser responsible for teachers support – Sophie Victoria Elbs, or the Organiser responsible for logistics – Isabella Fernández. Each of them is eager to assist you with any matter.



CONTACTS

Head Organiser

Adam Kindl

kindl@eyp.cz

+420 606 864 110

Head Organiser

Karel Hynek

hynek@eyp.cz

+420 608 529 276

Teachers' Support

Sophie Victoria Elbs

elbs@eyp.cz

+420 776 243 997

Event Safe Persons

Dany Pomyjová

pomyjova@eyp.cz

+420 608 372 023

Event Safe Persons

Katrusia Korpalo

kateryna.korpalo@ukma.edu.ua

+380 994 200 13

PARTNERS



**UNIVERSITY
OF NEW YORK
IN PRAGUE**



MINISTRY OF EDUCATION,
YOUTH AND SPORTS



Ministry of Foreign Affairs
of the Czech Republic



In cooperation with:



Evropský parlament
Kancelář v České republice

Under auspices of:



The project is implemented with the financial support of the Pilsen Region.

Projekt je realizován s finanční podporou Plzeňského kraje.